



# UNIQUE-MAG

## installation instructions

### important information - read before installing

Like other building products, the successful use of vinyl wallcovering requires that it be selected, installed, and maintained in compliance with all of these instructions. You must read and understand all of these instructions prior to installing vinyl wallcovering. If you have any questions, seek advice from an experienced building professional before proceeding. These instructions supersede and replace all prior instructions.

### before installation

What you receive	Wallcovering	
	Instructions	Only if the wallcovering requires water or paste
What you may need	Floor Cover	
	Step Ladder	
	Pencil	
	Scissors	Only if the wallcovering requires water or paste
	Pasting Brush	
	Wallcovering Hanging Brush	
	Sponge	
	Tape Measure	
	Sharp Knife	
	Spirit Level	
	Pasting Table	Only if the wallcovering requires water or paste
	Bucket of Clean Water	Only if the wallcovering requires water or paste
	Steam Stripped & Stripping Knife	Only if the wallcovering requires water or paste
	Priming	

### installation checklist

Read and follow all of these instructions.

- Check to ensure you received the correct pattern, colour, and amount of product.
- Prepare wall surface and install as directed below.
- Note: If at any time during the installation a discrepancy is discovered, STOP installation and contact your distributor or dealer to resolve before proceeding. The distributor carries no liability for installation errors.

# surface preparation

- 1 Proper surface preparation is essential for a quality gypsum board. Hanging on any other surface will require different instructions.

The walls must be smooth, clean, dry, and free of mold, mildew, grease, or other stains. If you are installing over existing paint or primer, make sure that it has good adhesion to the wall. Any mold or mildew on a wall may be an indication of a moisture problem. The mold itself must be removed from the wall and any moisture accumulation sources must be corrected before proceeding with installation. Significant mold growth should be remedied by an experienced mold remediation professional under EPA guidelines for mold remediation. Any wall irregularities should be corrected with either spackling or drywall compound. Wall stains and marks such as ballpoint ink, grease, lipstick, crayon, marking pens, or inks must be removed from the wall. If stains and marks are not removed from a wall they may bleed through the wallcovering.
- 2 Remove old wallcovering completely including both top and bottom layers. After wallcovering is removed, remove remaining adhesive with adhesive remover. Rinse the wall and allow to dry.
- 3 Apply Roman Pro 935 wallcovering primer or equivalent primer to install on MDF. Do not use an oil based or alkyl primer not specified for wallcovering.

# installation procedure

## step 1

Prepare the wall	<p>Clear furniture and other obstructions from your work area.</p> <p>It is recommended to paint any other desired surface before starting to hang the wallcovering.</p> <p>The wall surface should be clean, smooth, dry and free of debris.</p> <p>Priming is recommended in the following cases:</p> <ul style="list-style-type: none"><li>• An old, damaged, or flaking paint job</li><li>• A wall with uneven surfaces, such as paneling.</li></ul> <p>Lay out the drop cloth to protect the flooring.</p> <p>Draw a line at the width of the panel on the Wall and plumb.</p>
------------------	---

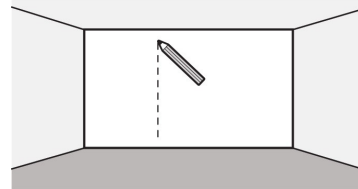


Figure 1

## step 2

Prepare the panels	<p>Use Roman Pro 774 Wallcovering Adhesive or equivalent.</p> <p>Be sure that you only apply the paste on the backside of the wallcovering.</p> <p>Lay the wallcovering face down on the table, so the panel of the wallcovering hangs over the ends.</p> <p>Load the pasting brush and wipe off excess paste. Apply the paste from the top to the bottom, and from the center to the edges in a herringbone pattern.</p> <p>Book the media to relax the panel before installation.</p> <p>Lay the panel on the floor glue-side up.</p> <p>Fold the glue side against itself. <b>IMPORTANT:</b> Avoid creasing paper when booking; it is not necessary for the booked panel to lay perfectly flat.</p> <p>The booked strip will now have graphics on both sides, with the glue in contact with itself.</p> <p>Repeat the operation with the other panels. Between panels, we recommend wiping the table in order to remove any paste spills.</p>
--------------------	--

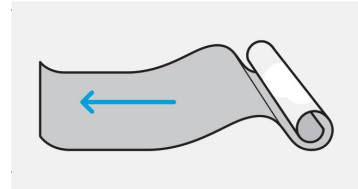


Figure 2

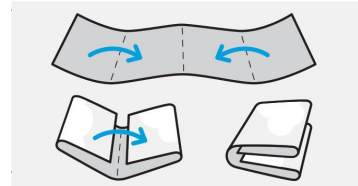


Figure 3

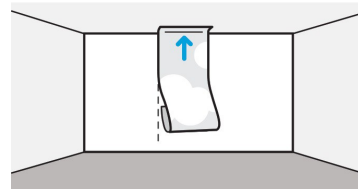


Figure 4

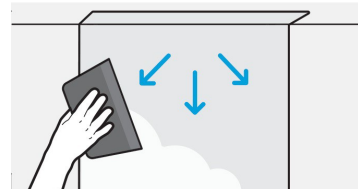


Figure 5

### step 3

#### Install first panel

The panel install process is equal for all types of wallcoverings. We recommend hanging the first panel in a part of the wall without any obstructions, such as windows or doors. It is recommended to start in the corner, or, on center if the printed graphic must be centered.

Start placing the first panel at the top part, using the vertical lines drawn previously as a reference.

Align the horizontal reference guides printed at 2" from the top of the panel with the intersection of the Wall and the ceiling.

Smooth down the paper with the wallcovering hanging brush, working from the top center to the bottom edges, ensuring that there are no air bubbles and that the edge stays on the pencil mark.

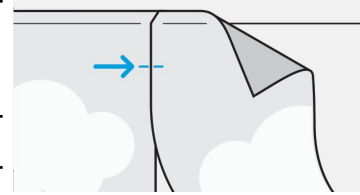


Figure 6

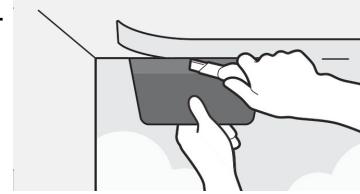


Figure 7

### step 4

#### Install remaining panels

Overlap and double-cut method must always be used for a better match.

Once the first panel is correctly hung, start hanging the following panels, referencing the first panel and its crosshair marks. Panels should overlap by about 2"; make sure that the two-crosshair markings are matched at eye level. Smooth down the wallcovering in the same fashion as the first panel.

### step 5

#### Trimming & Finishing

Cut away excess material around obstacles (e.g. windows or doors).

Using a straight edge, push the panel flush against the Wall and into the joint/intersection between the wall and the window or door.

Using a straight edge and the same technique used to trim around objects, trim the edge of the LeveyArt along the ceiling, baseboard, and wall edges.

Using the straight edge as a guide, cut away the overlapping material with a sharp utility knife.

**TIP:** The knife blade must be sharp to prevent tearing; freshen the blade frequently.

### step 6

#### Hanging wallcovering around light switches or sockets

Uninstall the fitting cover.

Hang a panel over the fitting and smooth it tightly.

Make a hole in the wallcovering where the center of the fitting is placed with the scissors.

Remove the wallcovering surplus from the fitting. Be careful when removing it, and never exceed the fitting cover size.

Mount the fitting cover again.

For more information, please contact Levey directly at 1-800-588-3990 or at [csr@leveyindustries.com](mailto:csr@leveyindustries.com).